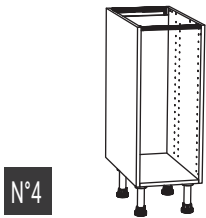


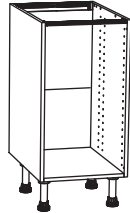
# Habillage dos d'ilot MODELE STANDARD HI1.0

Retrouvez toutes les informations sur [www.oskab.com](http://www.oskab.com)



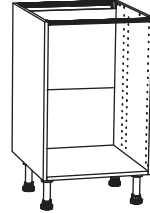
N°4

• H.70 x L.30 x P.56 cm



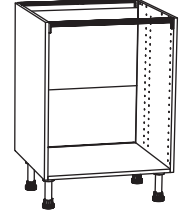
N°5

• H.70 x L.40 x P.56 cm



N°6

• H.70 x L.50 x P.56 cm



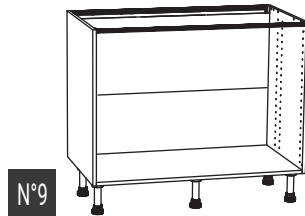
N°7

• H.70 x L.60 x P.56 cm



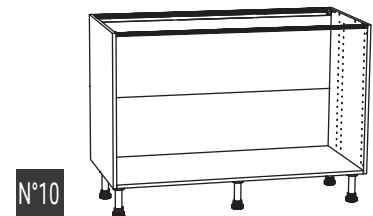
N°8

• H.70 x L.80 x P.56 cm



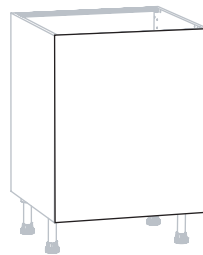
N°9

• H.70 x L.100 x P.56 cm

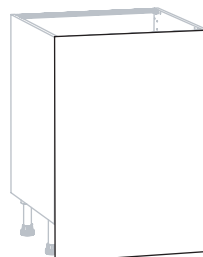
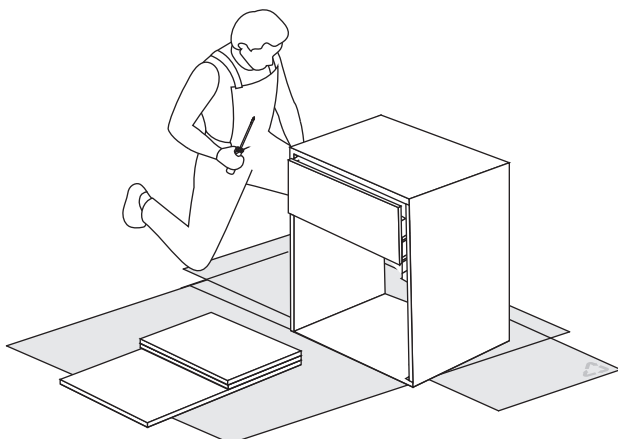
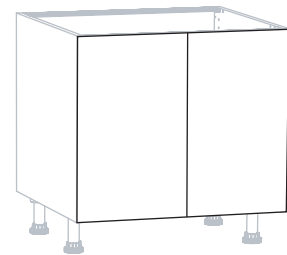


N°10

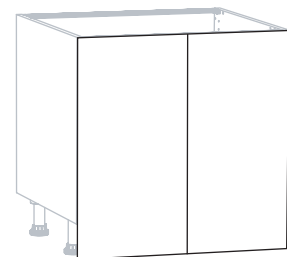
• H.70 x L.120 x P.56 cm

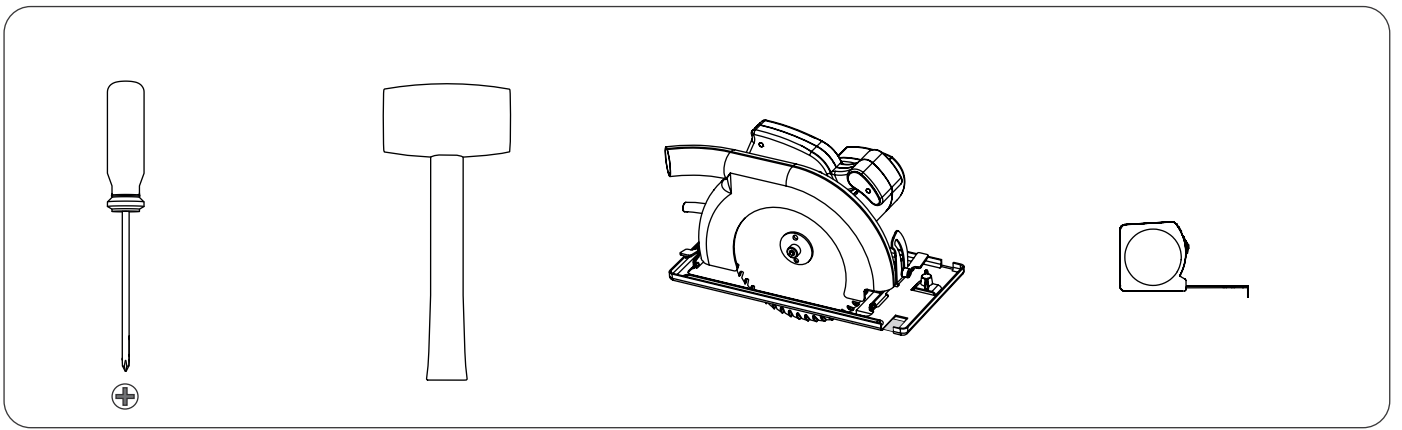


N°18 N°19 N°20 N°21

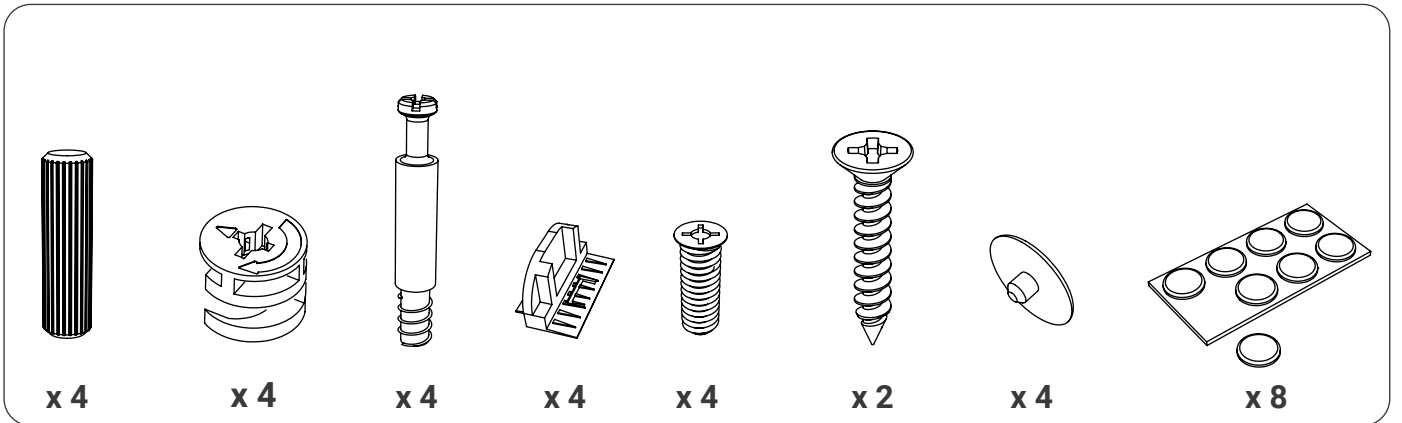


N°23 N°24

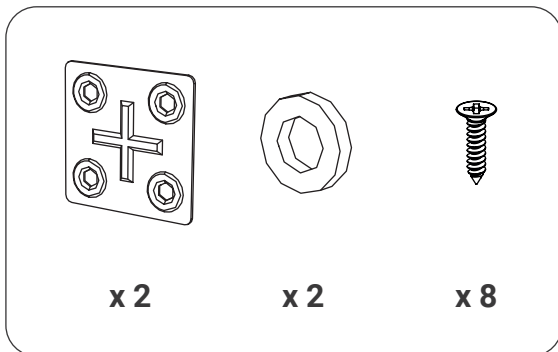




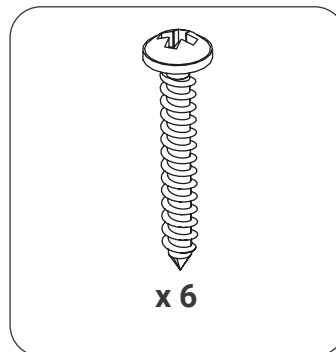
· CONTENU DU SACHET N°146



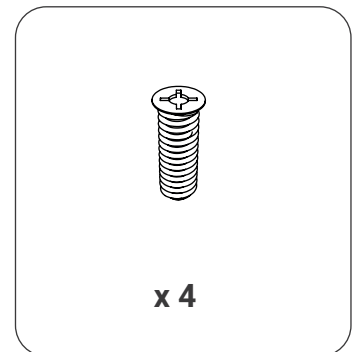
· SACHET N°7



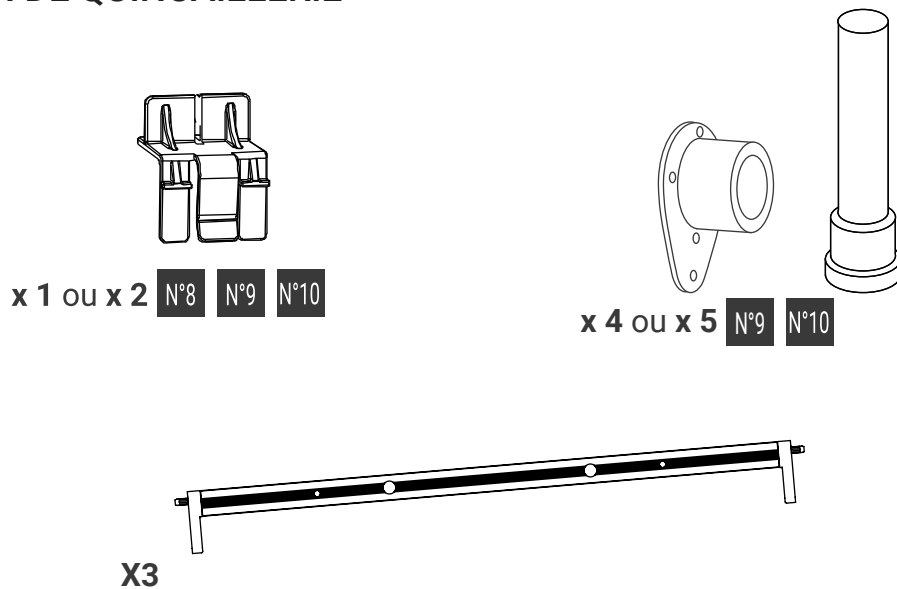
· SACHET N°19

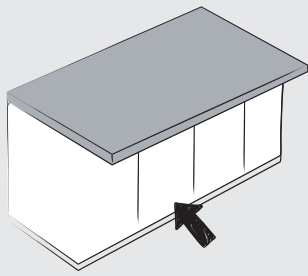


· SACHET N°154

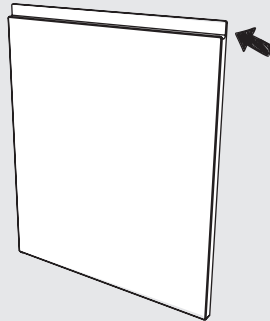


· CARTON DE QUINCAILLERIE





En cas d'habillage de dos de caisson en **modele IPOMA** référez vous à la notice dédiée:  
[www.oskab.com/notices/ilot](http://www.oskab.com/notices/ilot)

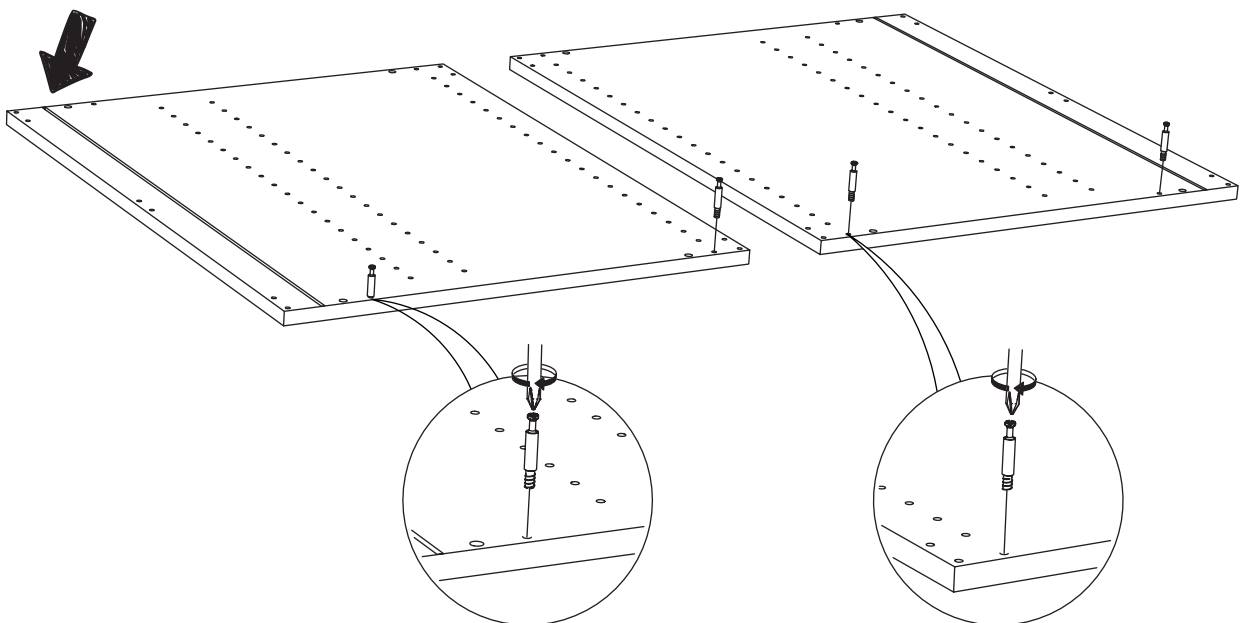


1

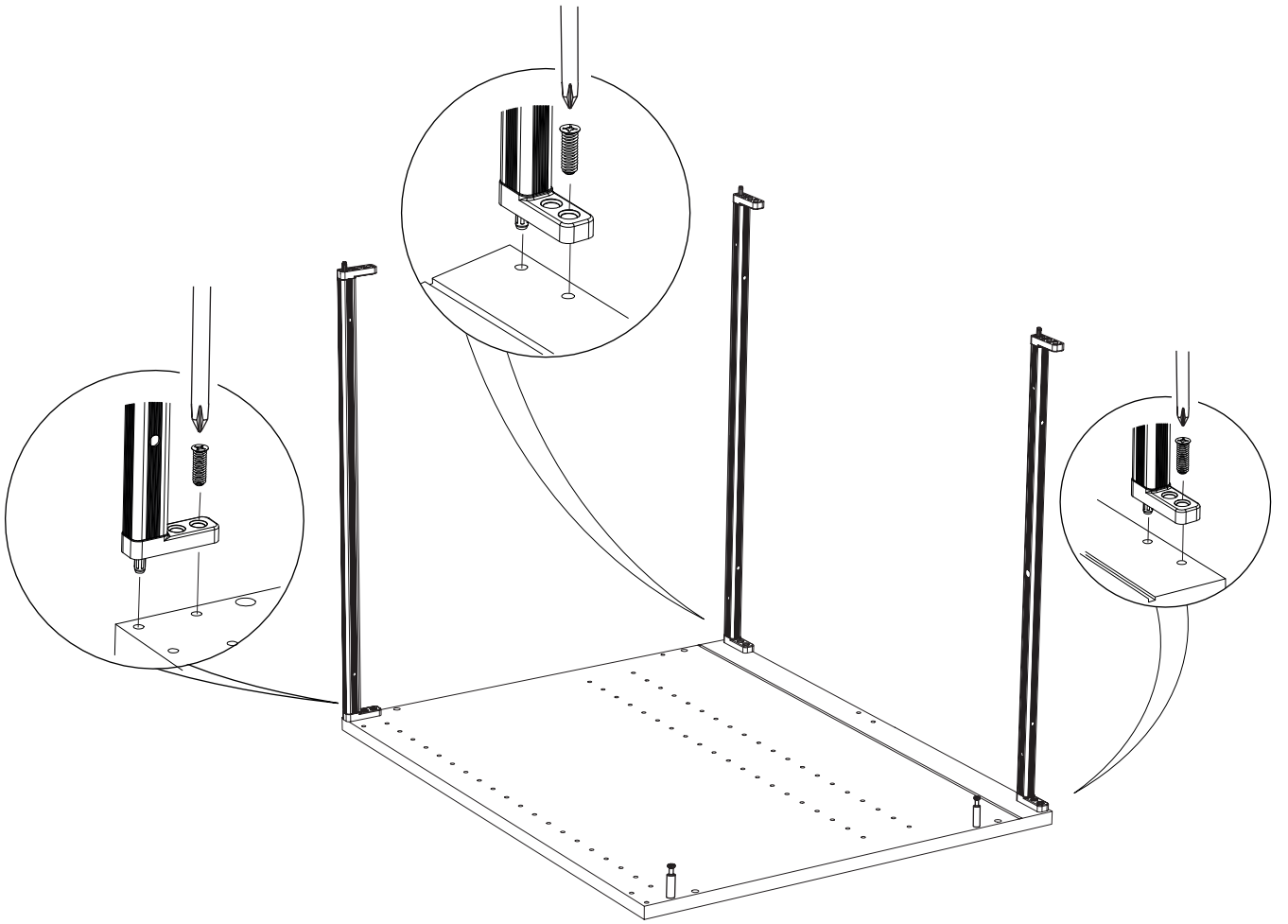


**Astuce**

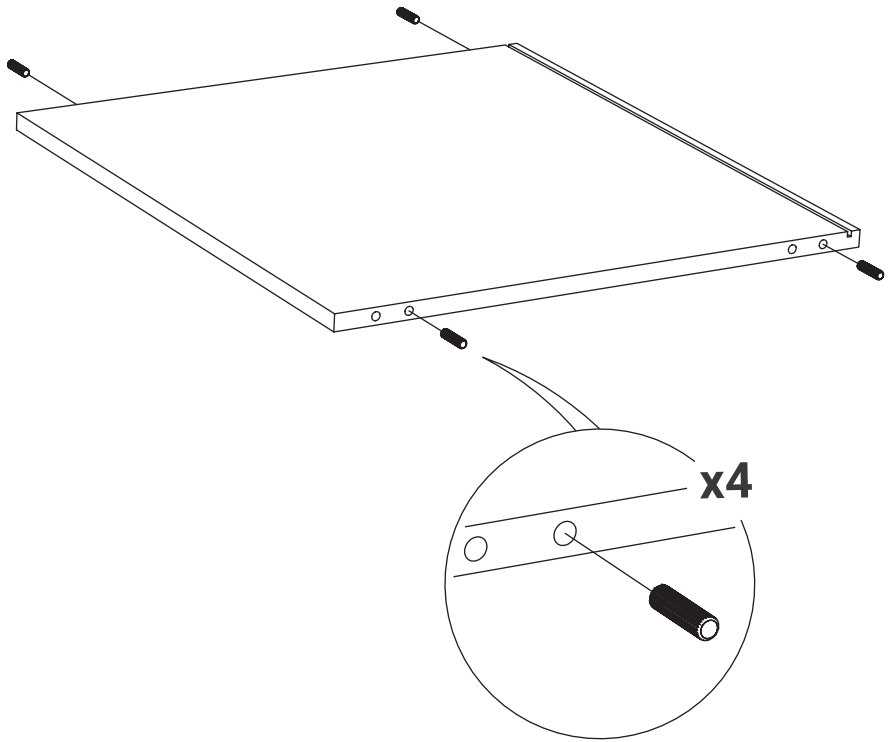
Si vous avez prévu d'installer des tiroirs sur ce caisson, il est plus facile d'y installer les systèmes coulissants dès cette étape. Reportez-vous aux notices Tiroirs : TIR 1 et TIR 2



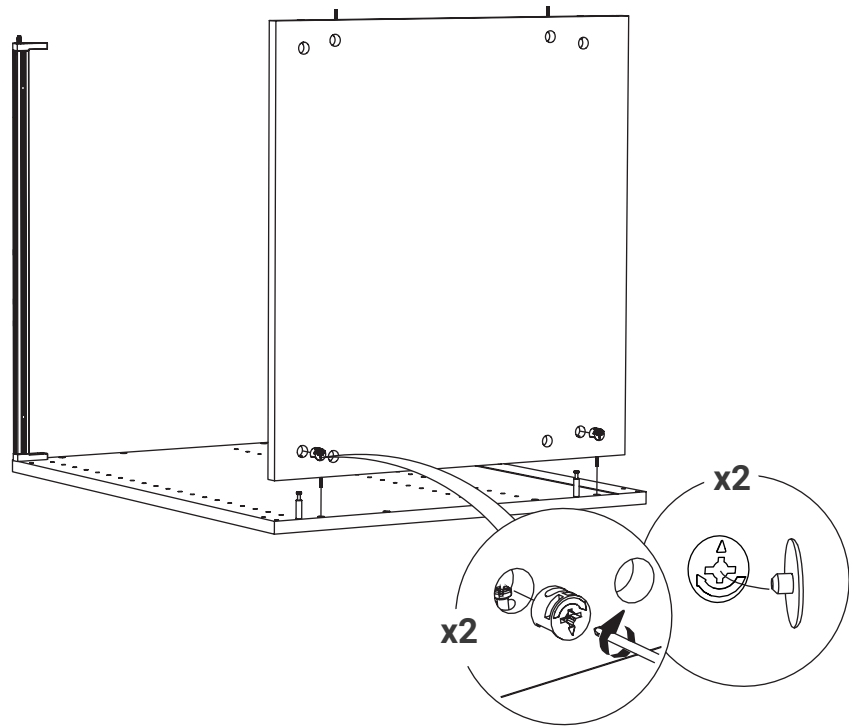
2



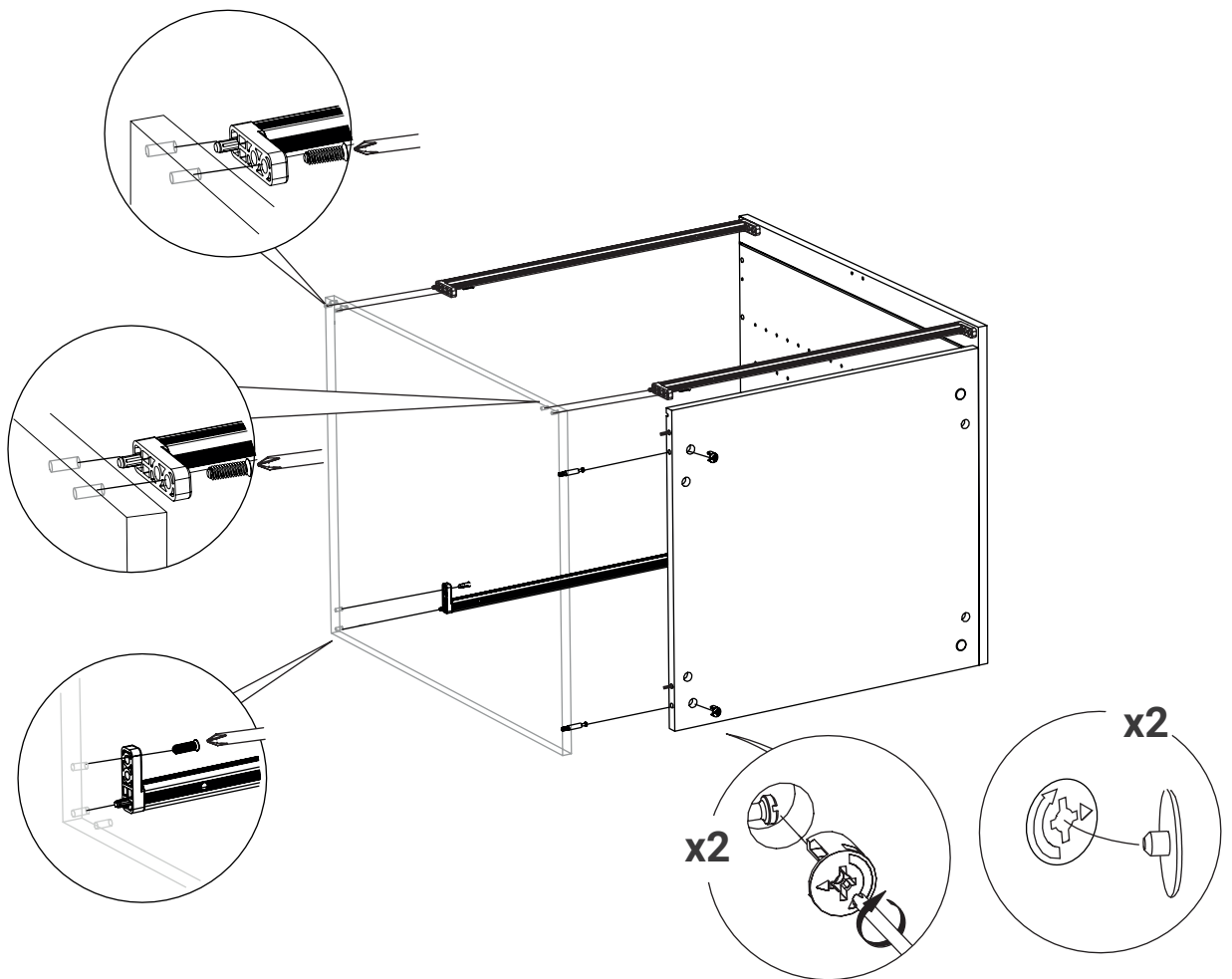
3

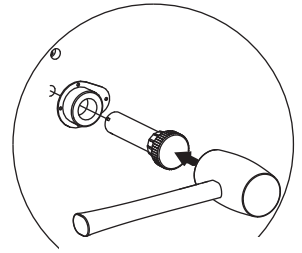
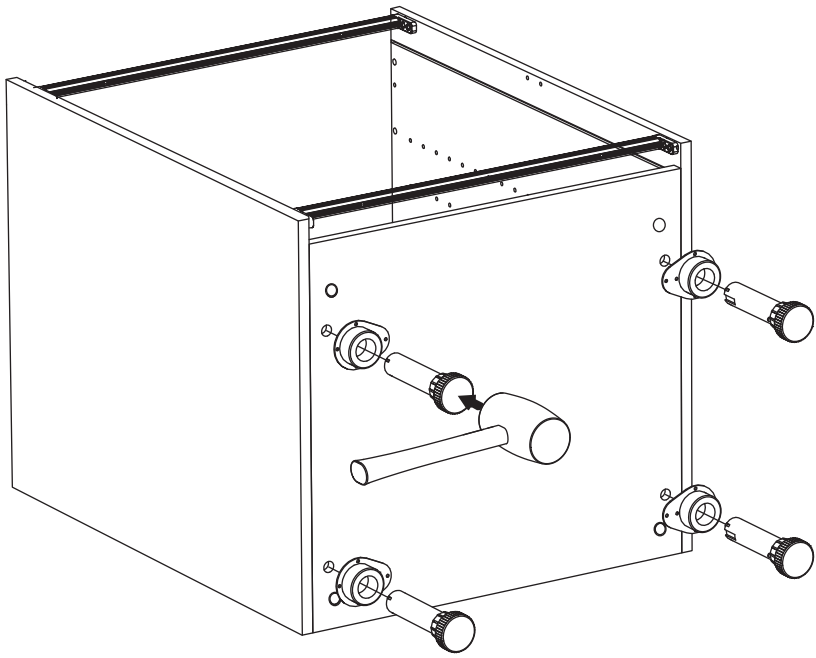


4



5

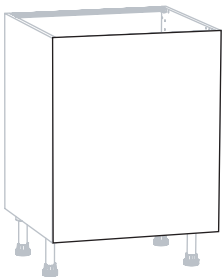




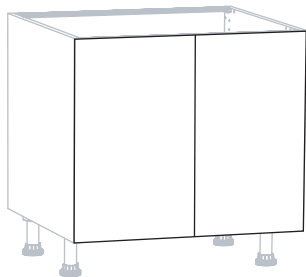
**x4** POUR **N°9**  
ou  
**x5** POUR **N°10**



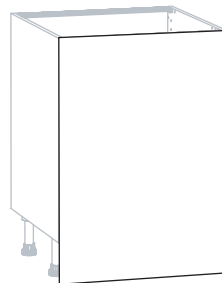
P.5



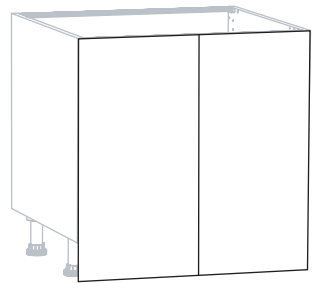
P.7



P.10



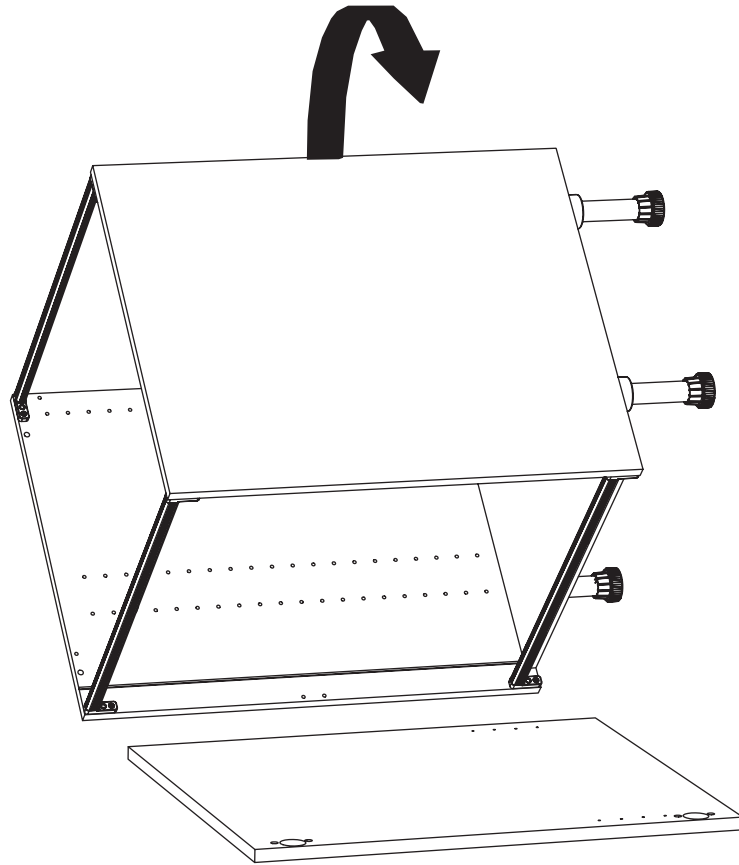
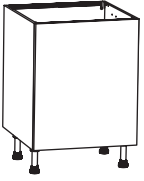
P.14



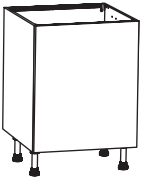
**N°18** **N°19** **N°20** **N°21**


**N°23** **N°24**

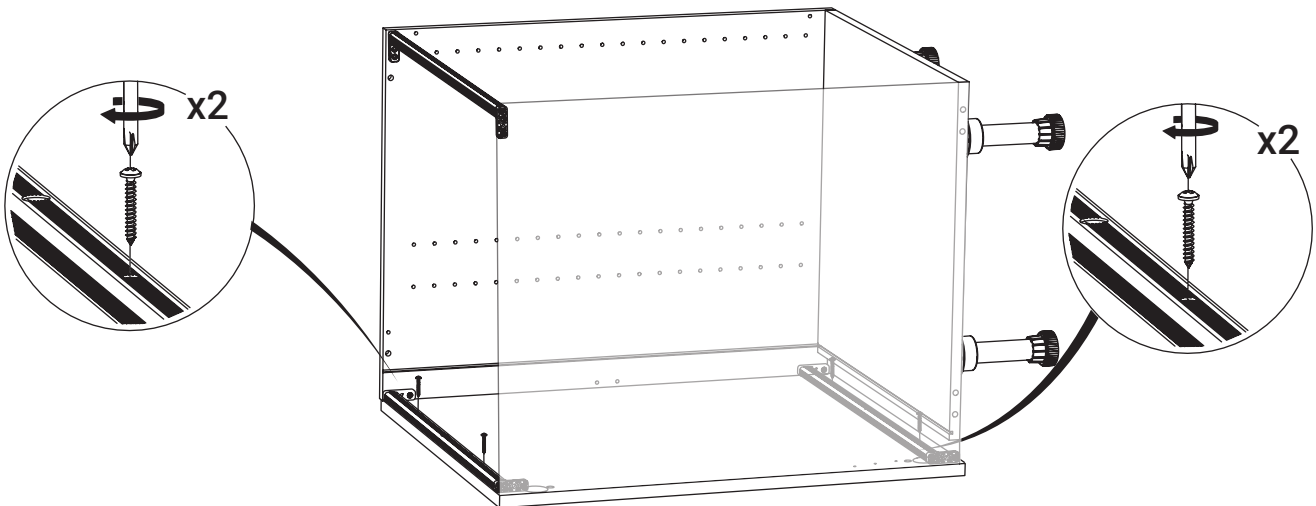
7



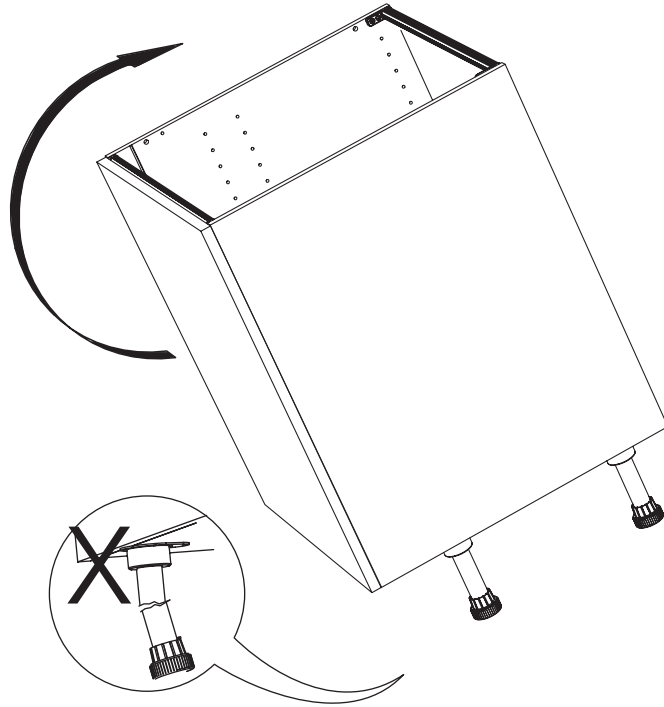
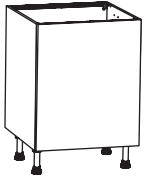
8



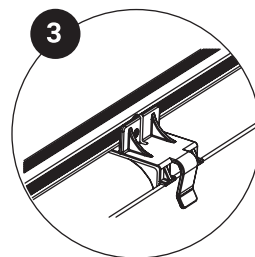
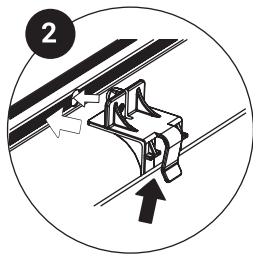
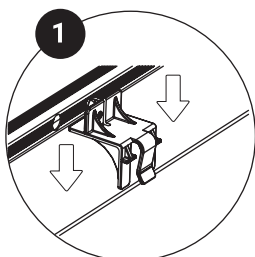
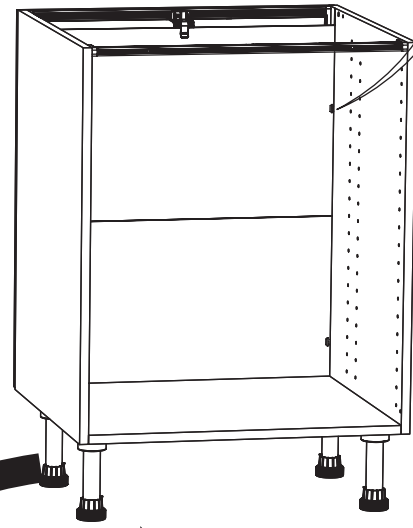
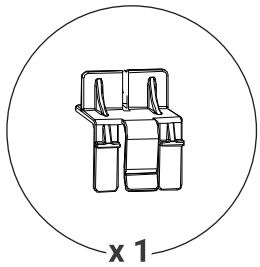
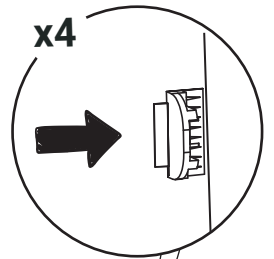
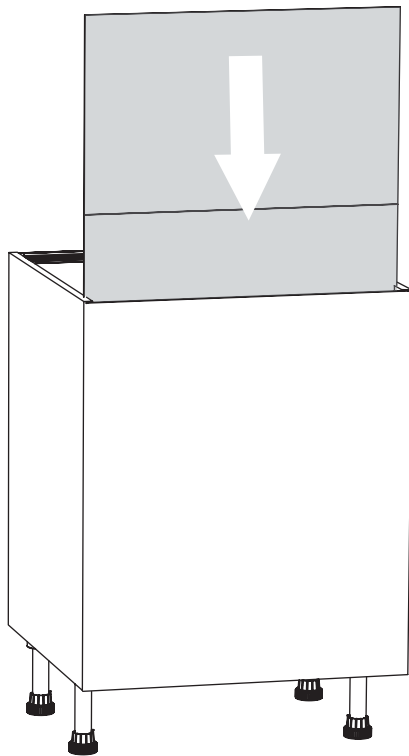
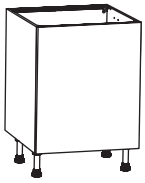
 Assurez-vous d'aligner parfaitement la largeur du dos à celui du caisson.



9

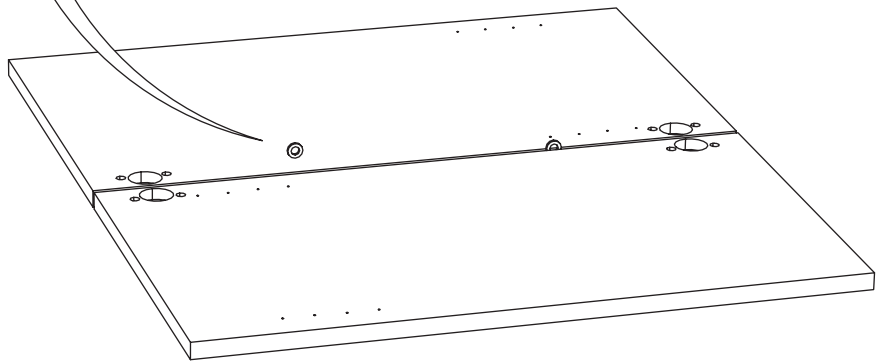
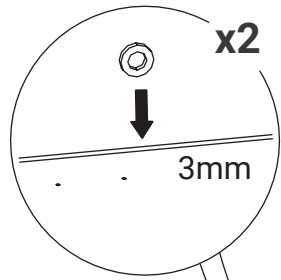


10

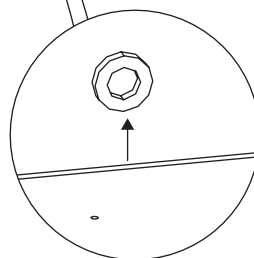
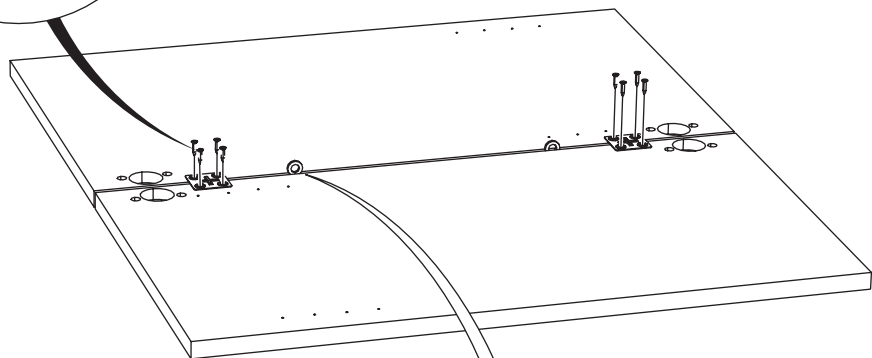
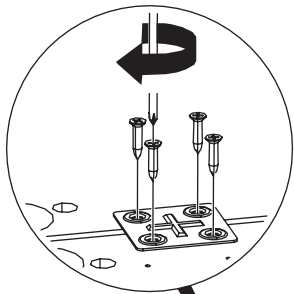
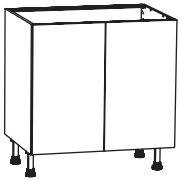




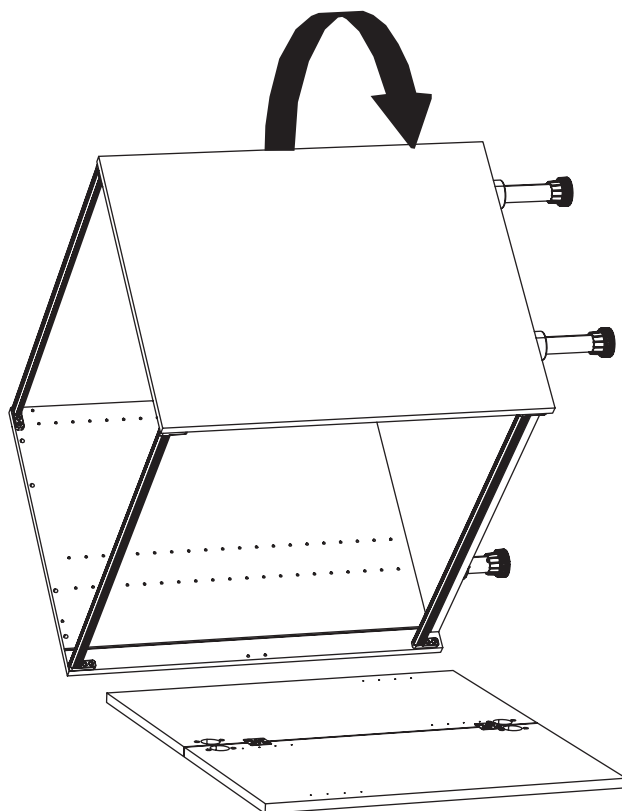
11



12




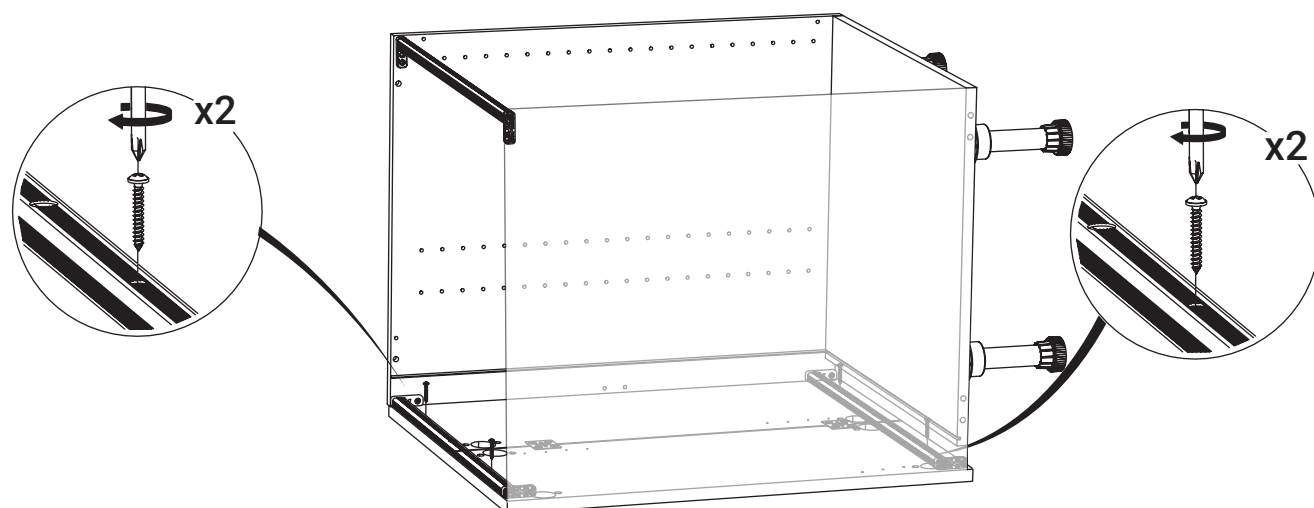
13



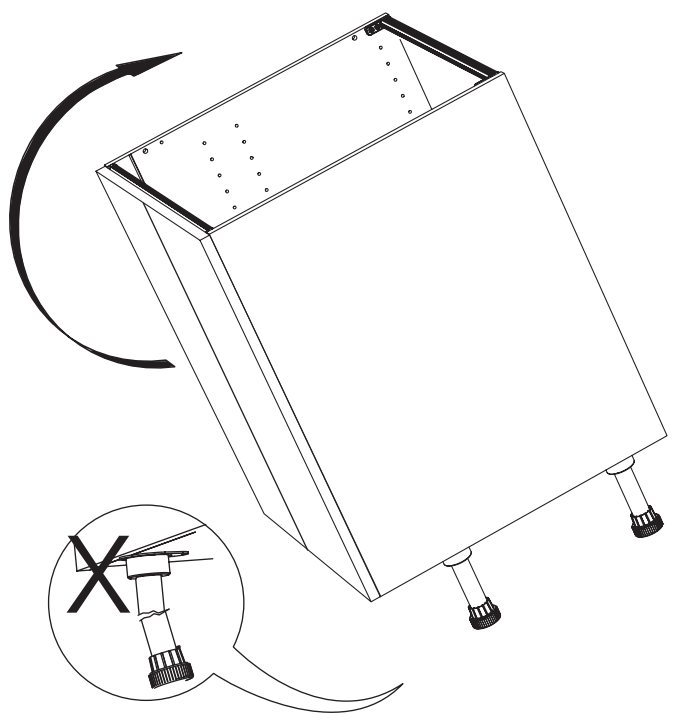
14



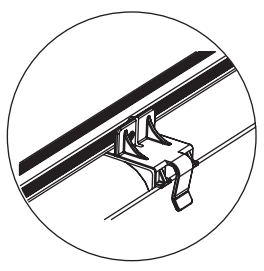
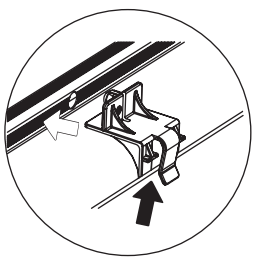
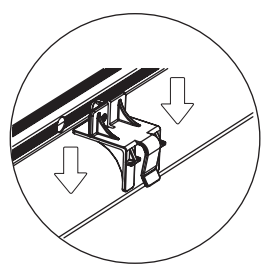
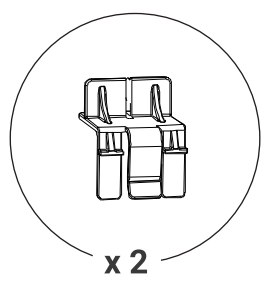
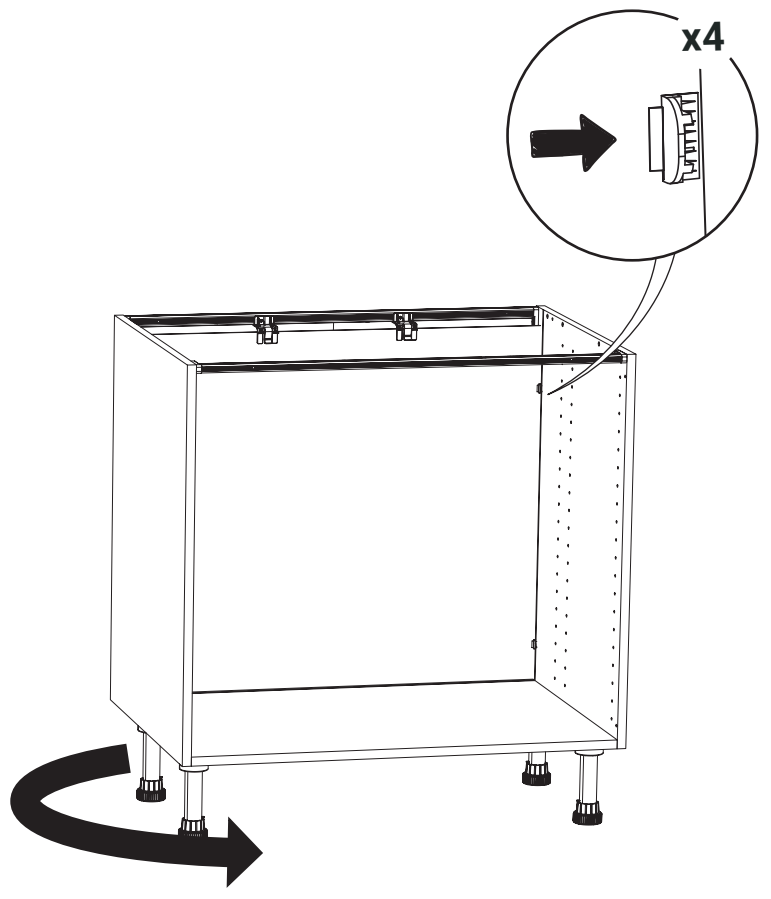
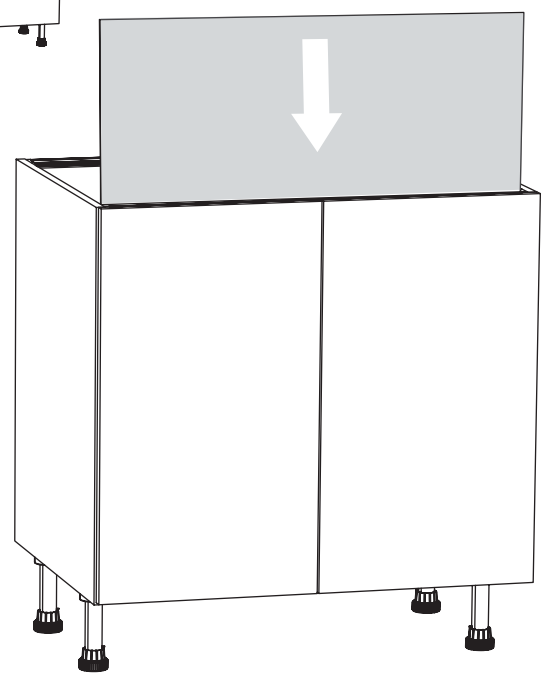
 Assurez-vous d'aligner parfaitement la largeur du dos à celui du caisson.



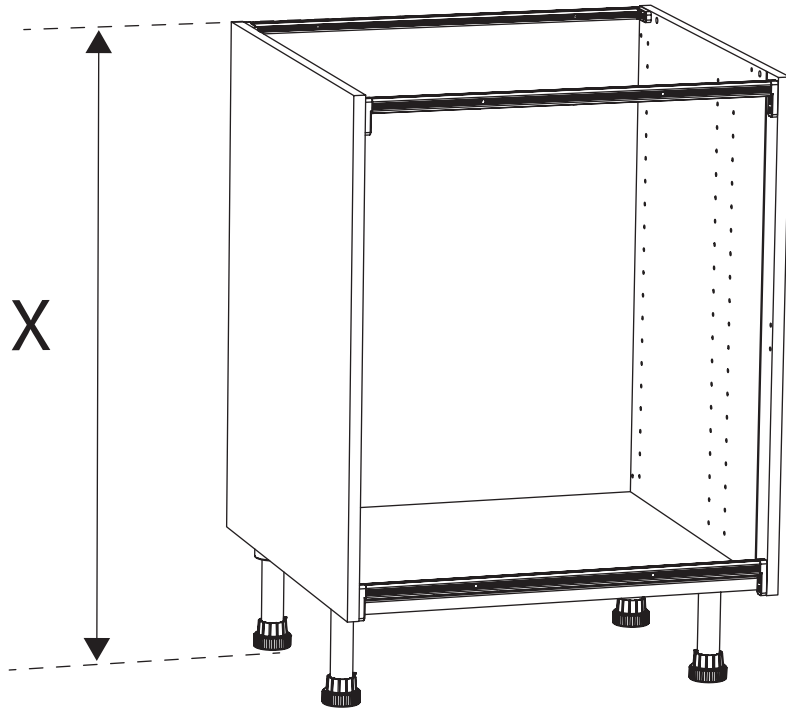
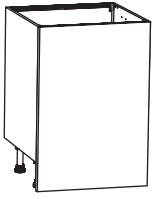
15



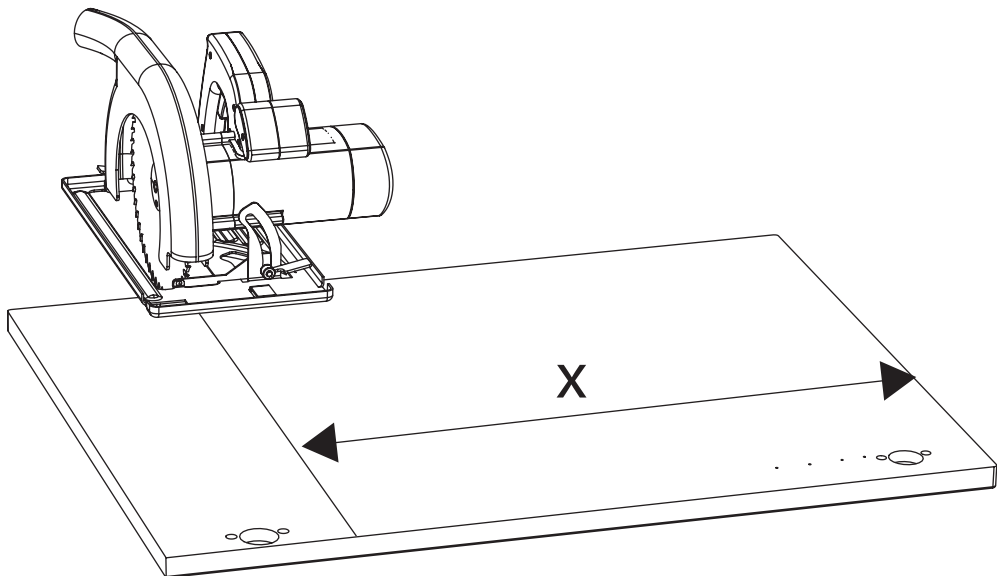
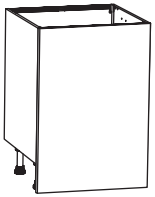
16



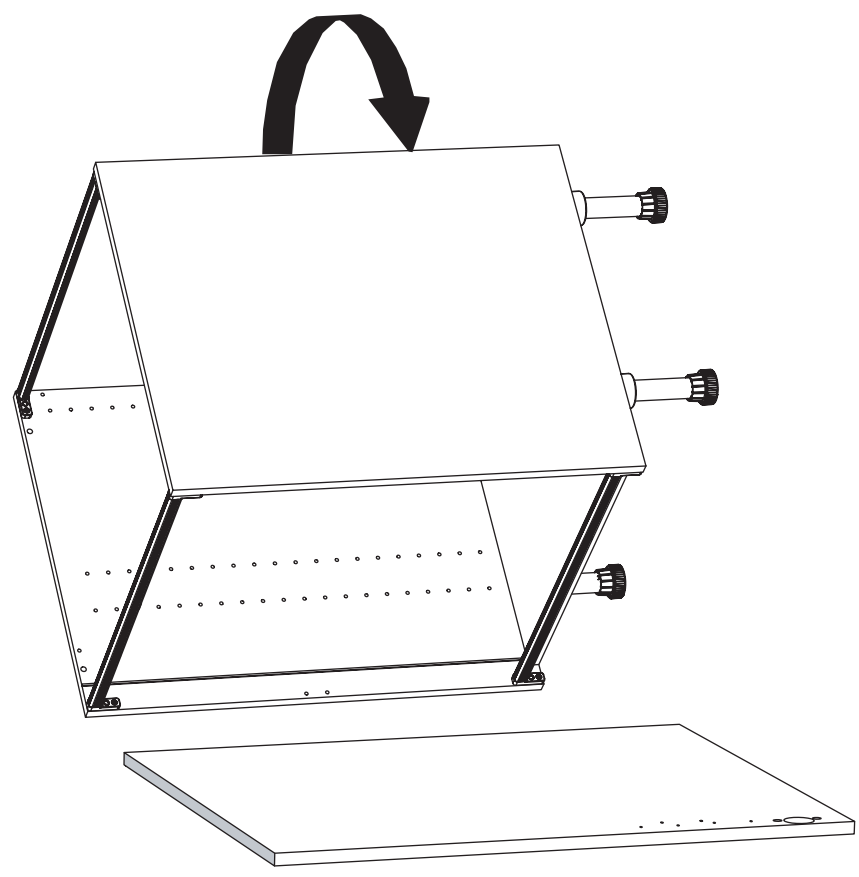
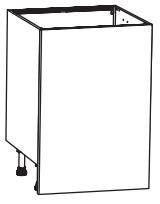
17



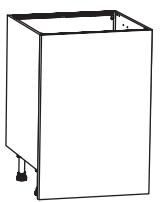
18




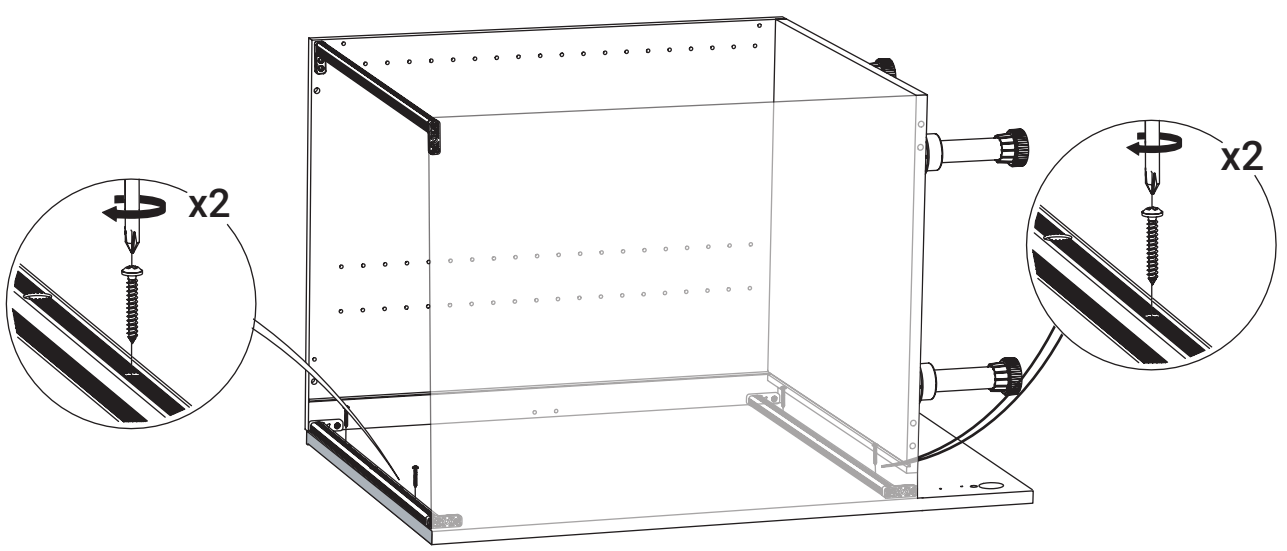
19



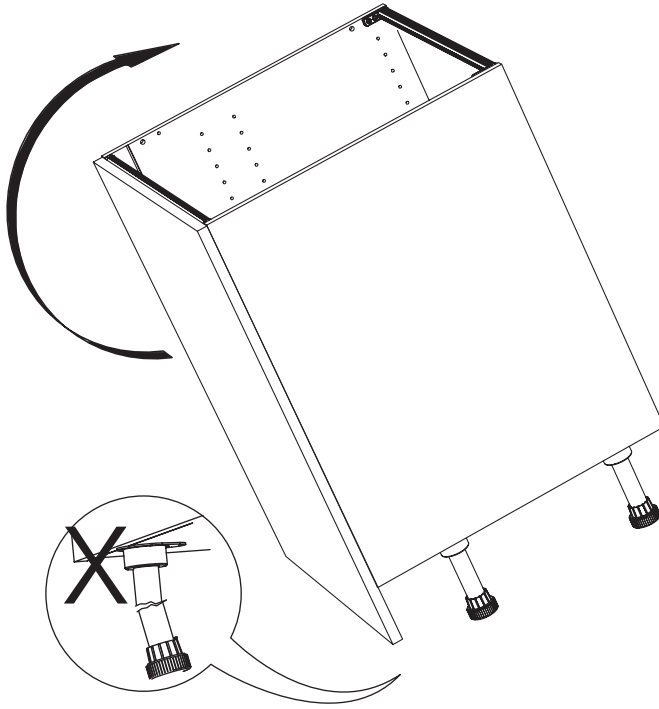
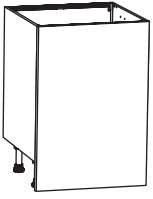
20



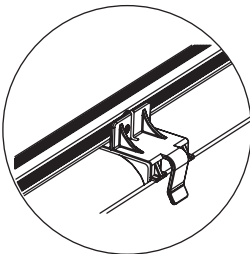
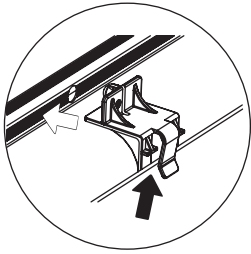
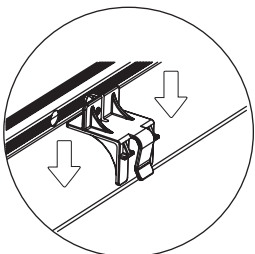
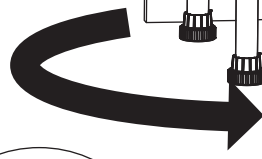
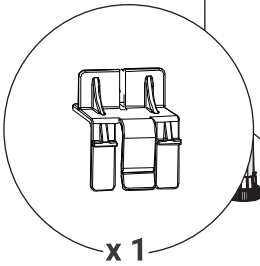
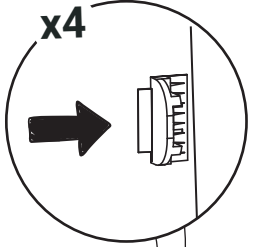
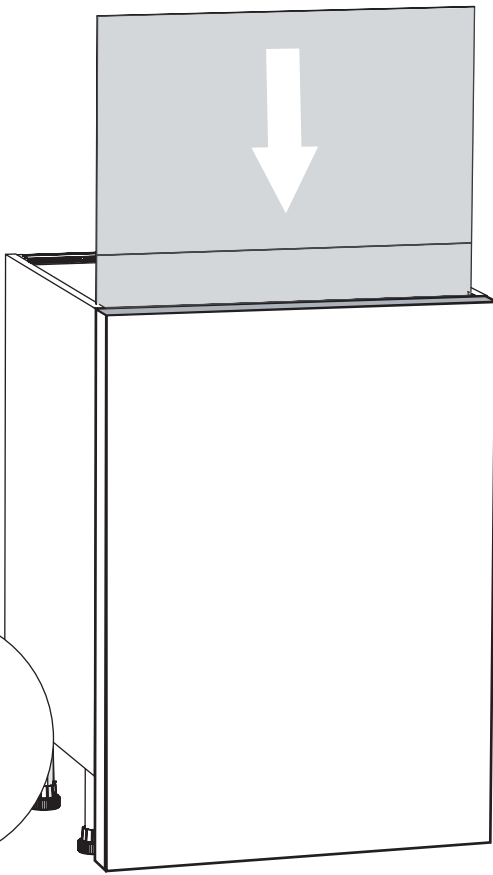
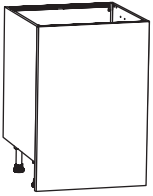
 Assurez-vous d'aligner parfaitement la largeur du dos à celui du caisson.



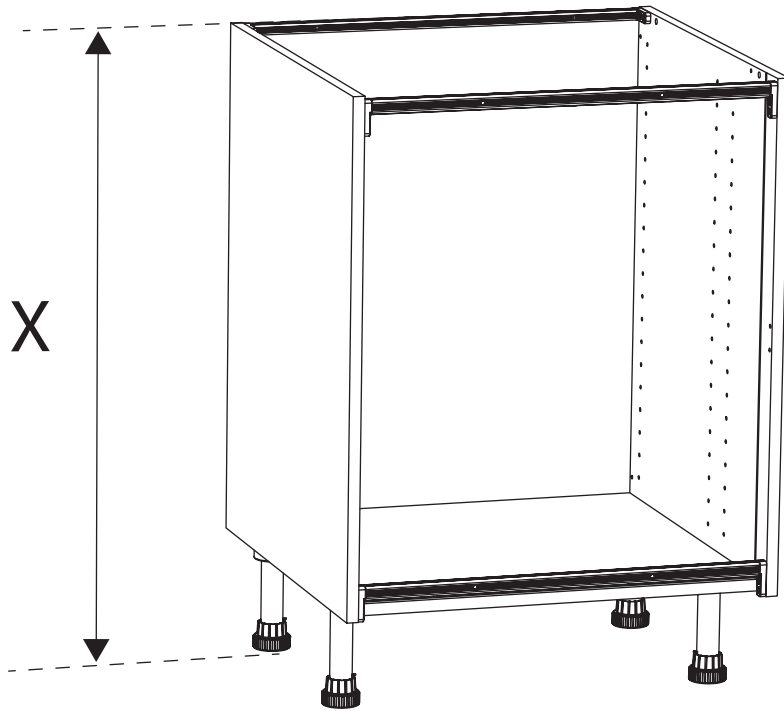
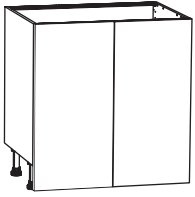
21



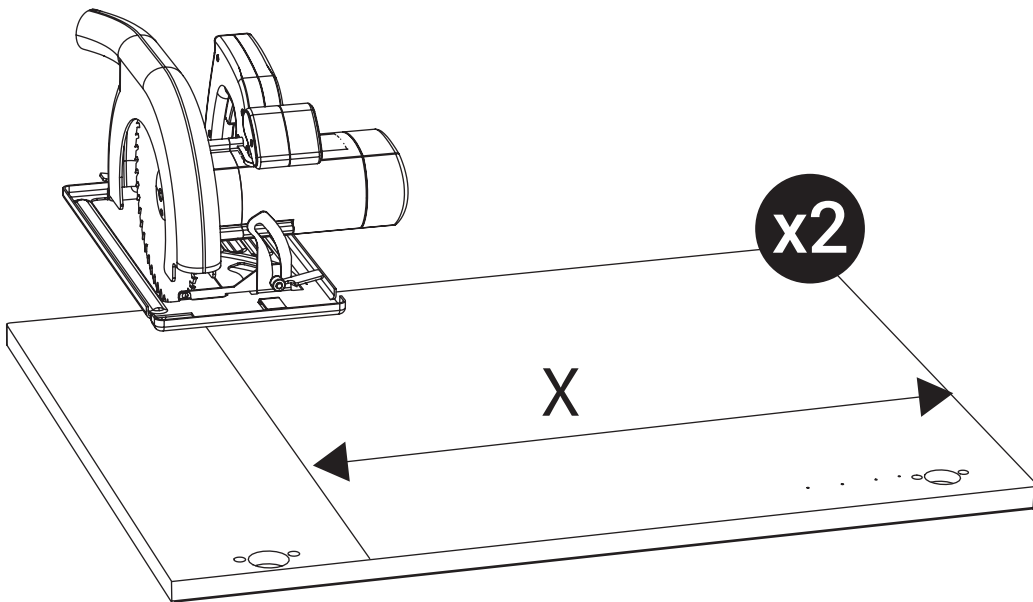
22



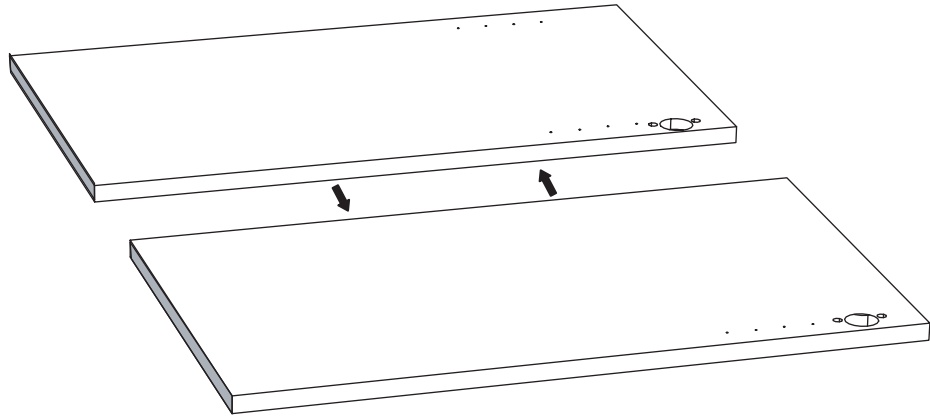
23



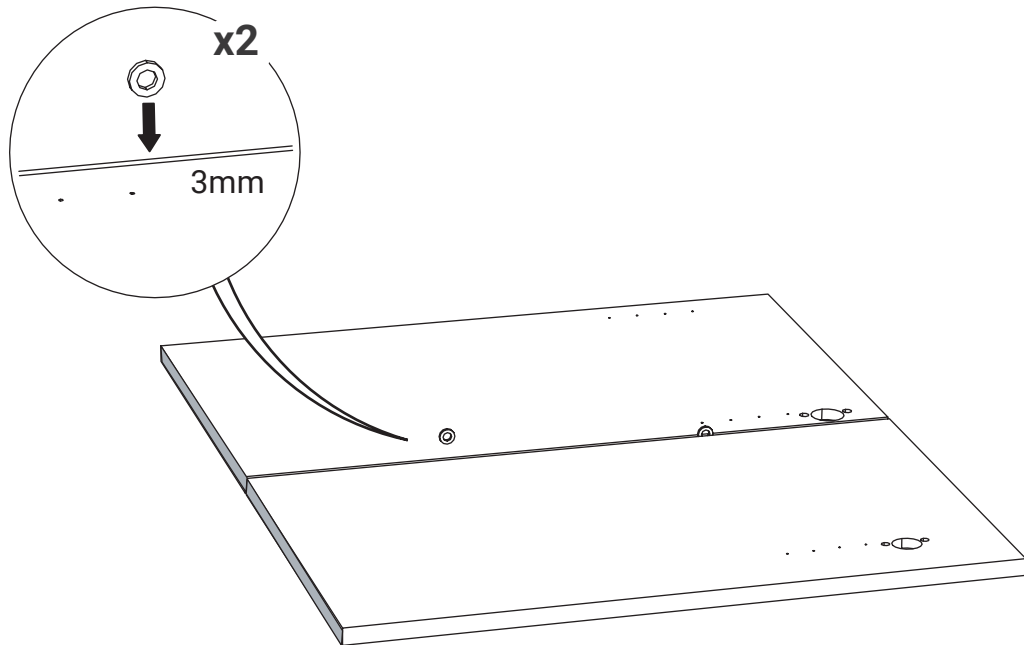
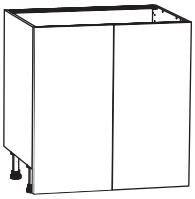
24



25

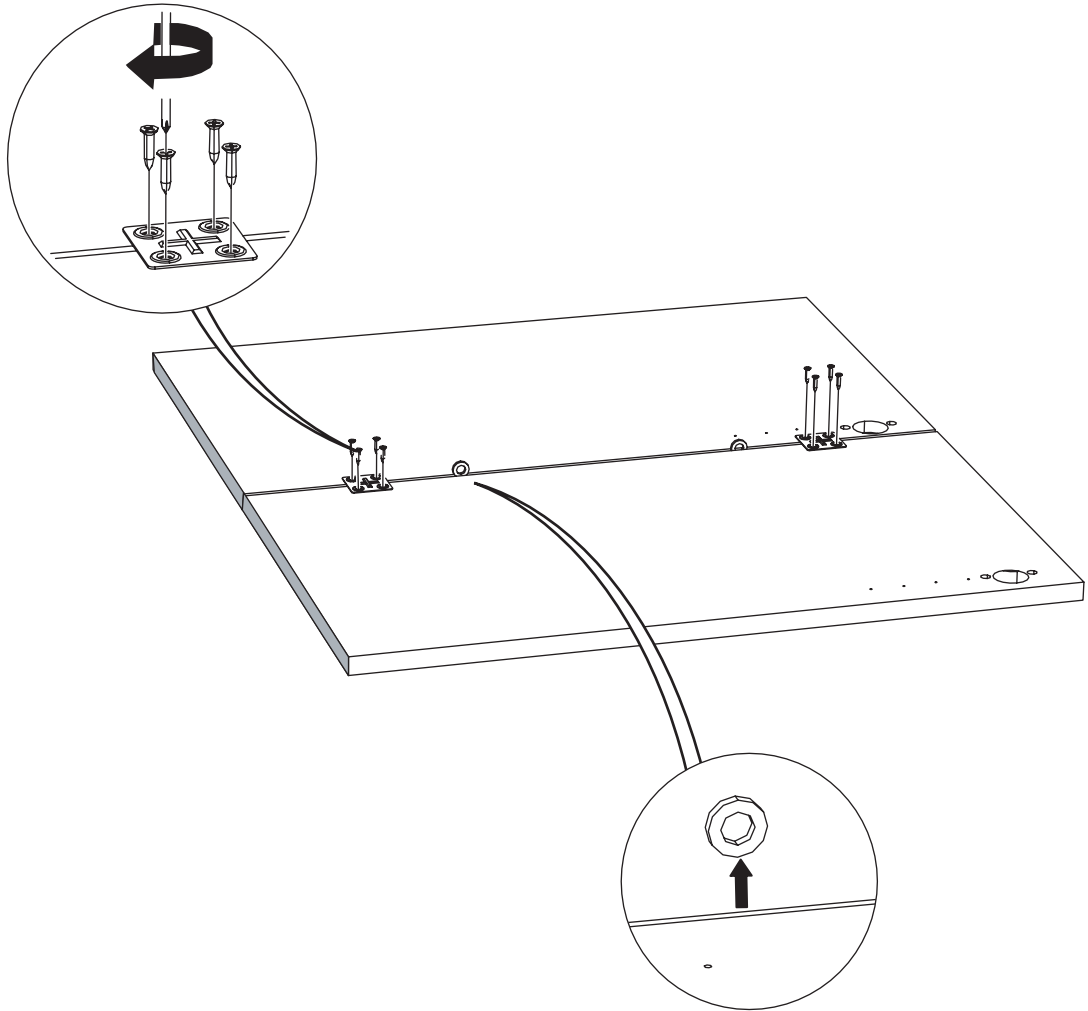


25

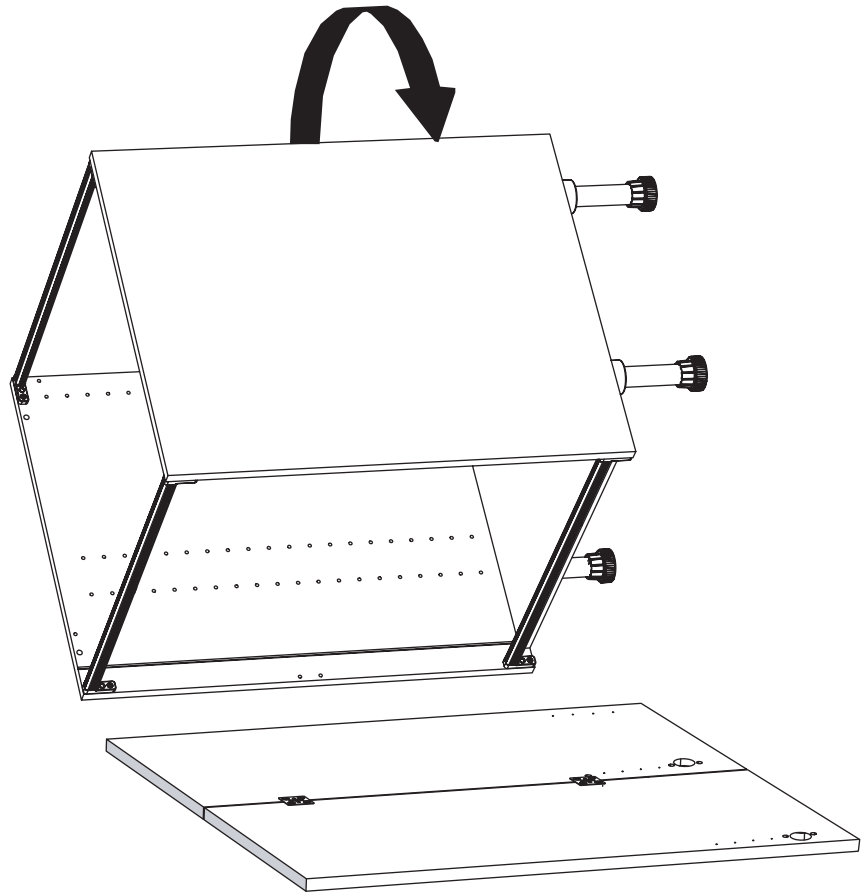




26




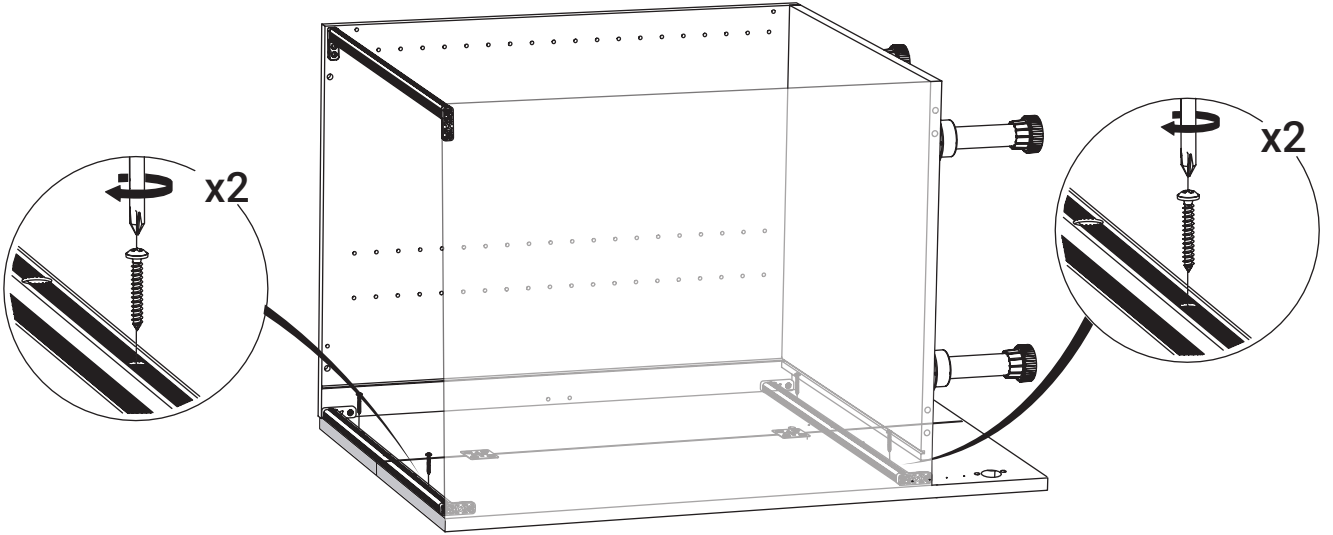
27



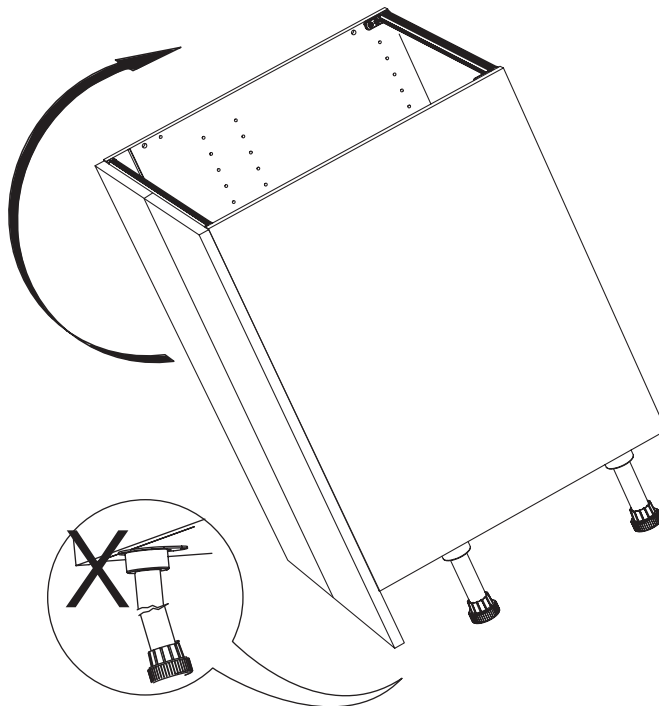
28



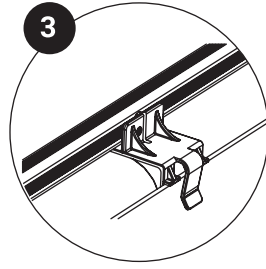
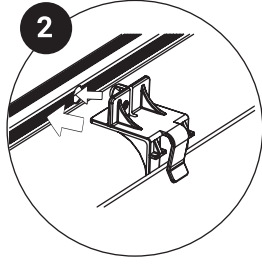
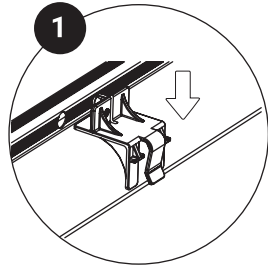
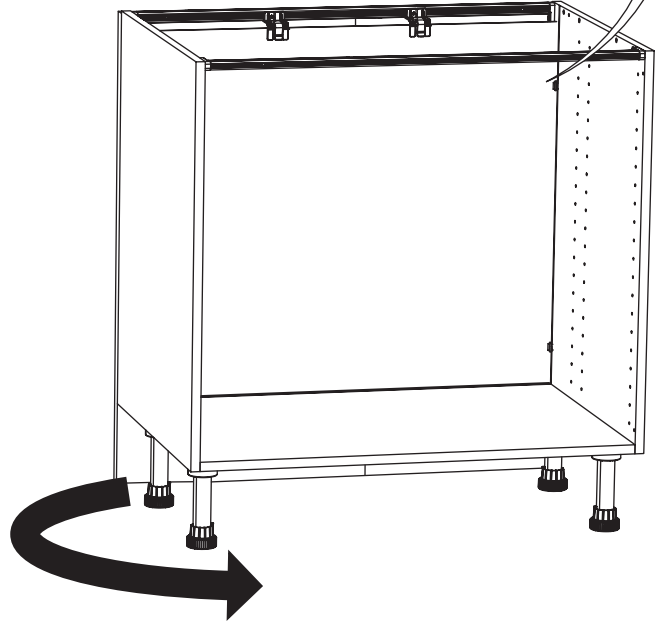
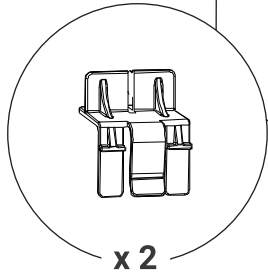
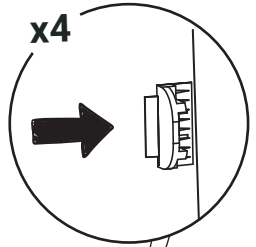
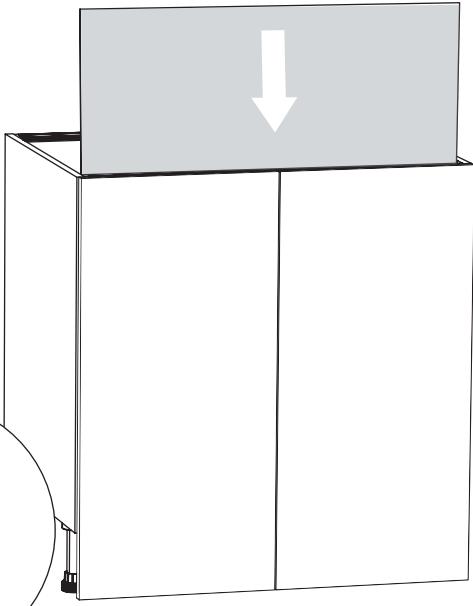
 Assurez-vous d'aligner parfaitement la largeur du dos à celui du caisson.



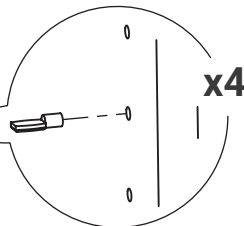
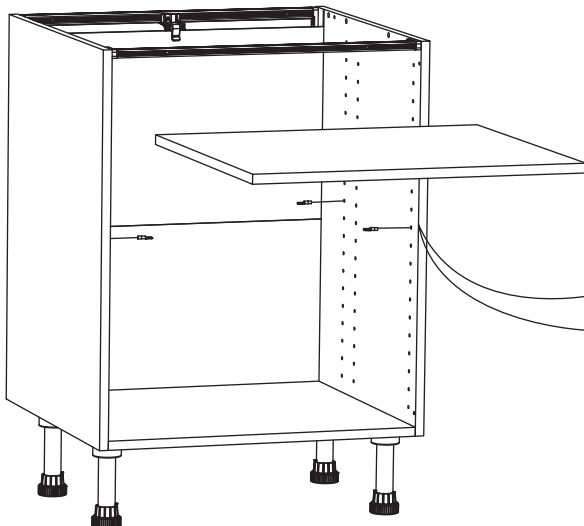
29



30



33 OPTION



(i)	L.30 Colis	N°66	L.100 Colis	N°70
	L.40 Colis	N°141	L.120 Colis	N°71
	L.50 Colis	N°88		
	L.60 Colis	N°139		
	L.80 Colis	N°69		

## · POUR FINIR



Charnières : CHAR 1

Façade Joue : JOUE 1

Tiroir : TIR1

Tiroir Casseroles : TIR2

Tiroir sous plinthe : TSP

Support four : SF1

Plan de travail stratifié : PDT1

Plan de travail bois massif : PDT2

Plinthe bois : PLI 1

Plinthe PVC : PLI 2

## · ENTRETIEN

